



Long Center for the Performing Arts

West Donor Lounge and Lobby

Mezzanine Level

Room Dimensions

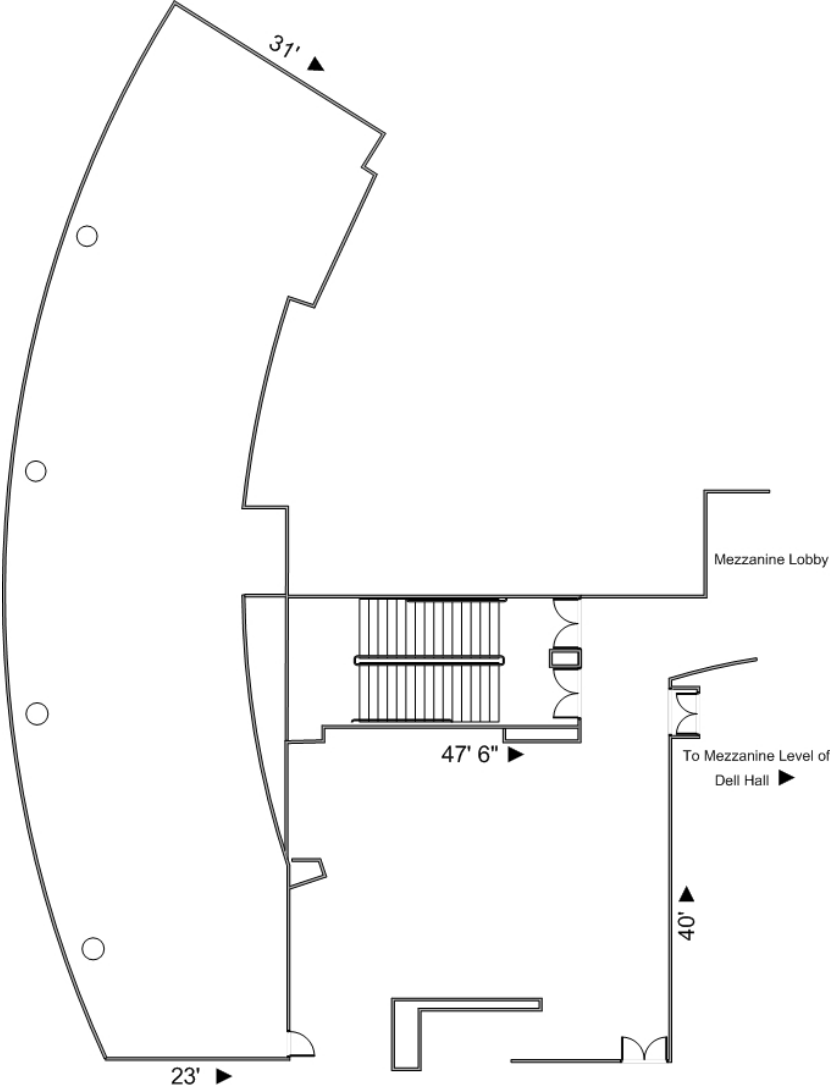
4,000 sq. ft. – West Donor Lounge
 1,548 sq. ft. – West Lobby
 Mezzanine Level

Overview

Views of the Austin skyline and Butler Park can be seen from the lounge’s open air space, which sits on the west side of the building.

Connected to the lounge is a large lobby space, perfect for banquets and reception areas.

Room Dimensions



Room Capacities

(all capacities are based on the room with all furniture removed)

	Rounds of 8	Rounds of 10	Reception
West Donor Lounge	176 people	200 people	300 people
	---	---	125 people